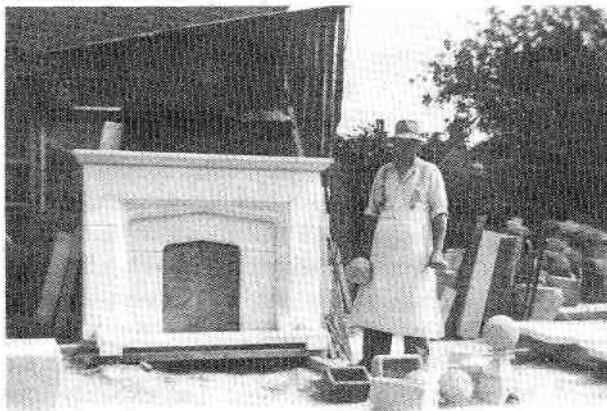


THE STONE CRAFTSMAN



will you come back to work for me again?" Among many other pieces of Leslie's work is the gravestone for the late Colonel Kettlewell in Fifield churchyard.

He was born locally in Westcote and came to live at 'The Folly', Fifield, when he was three years old. His father had been a farmer and Leslie loved the countryside and

He was just twentyone days short of reaching 85 years of age when Leslie Townsend of Fifield passed away on the 1st. January this year.

He was a banker mason who had worked for the local builders Messrs. A. Groves for practically all of his working days, except for a few years when he was directed to work for the Ministry of Defence at RAF Little Rissington.

Leslie had joined Groves as an apprentice when he was almost sixteen years old, but his earlier working life had been as a young lad working in the gardens at 'The Gables', now known as 'Snowhill House'; it was then owned by Colonel Kettlewell. Leslie often chuckled in later years how he had the sack from there five times...but each time he was asked to come back by the Colonel saying "You're a cheeky young devil but a damned good worker, so

nature all around him. He had continued to live in Fifield after his marriage to Mildred in 1929...yes, he had reached his diamond wedding anniversary!

Leslie was known to be always willing to help others, whether it involved mending spectacles, fixing fuses, repairing ball-cocks or broken windows, or helping someone who was ill or infirm.

The last piece of stonework which he completed was a French garden seat for H.R.H Prince Charles and Princess Diane which was placed in the gardens at Highgrove. Other pieces of his handicraft can be seen at many churches, houses and other buildings around the district, covering a large area; we may borrow the old saying... "If you would see his memorial, look around you." In lighter vein he was known to say, when confronted by a piece of hard stone, "If it's hard, then treat it the



MAKE YOURS THE BEST KEPT VILLAGE